

5 10 022 0110 0

## eibe playo balancing station Terraonda

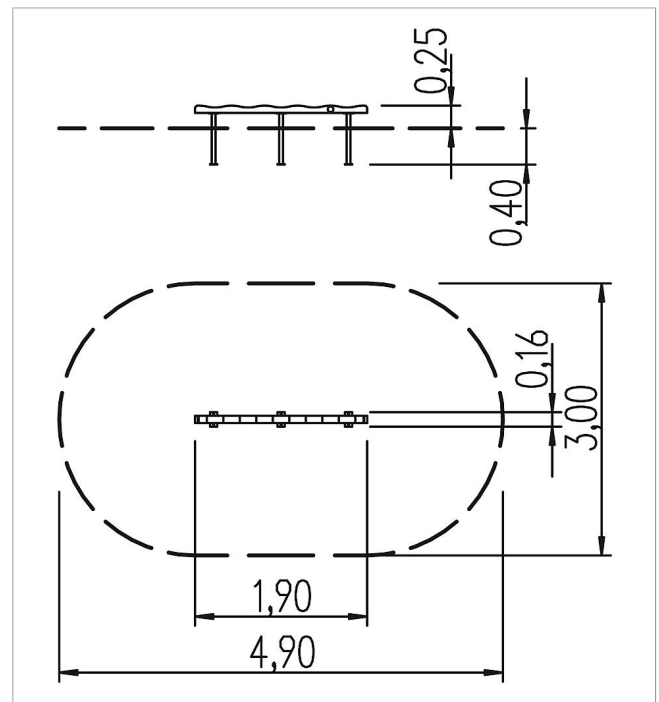
made in germany












### Scope of delivery

Wavy balancing beam: SW

Set of post shoes: hot-dip galvanised steel



	Material	SW pi
	Foundation level	FL 1
	Minimum space	490x300x205 cm
	Free falling height	25 cm
	Impact protection net	-
	Foundations	3x CF or 3x PFs
	Assembly	1 person/1.5 h
	Largest section	190x8x8 cm
	Heaviest section	20 kg