

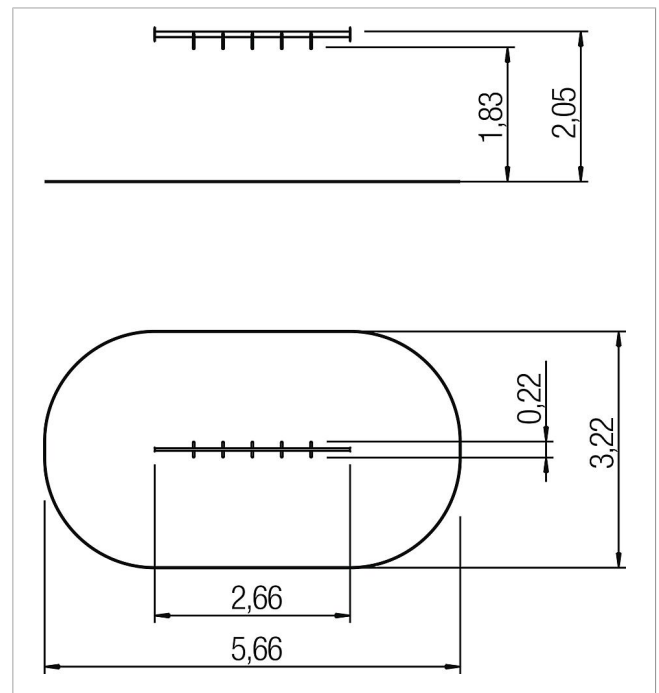
5 25 017 1200 0










eibe active trail hand-over-hand ladder crossing S5
made in germany



Scope of delivery

1x hand-over-hand ladder: Stainless steel



	Material	Stainless steel
	Foundation level	-
	Minimum space	566x322x205 cm
	Free falling height	83 cm
	Impact protection net	13 m ²
	Foundations	-
	Assembly	2 persons/0.5 h
	Largest section	24x32x265 cm
	Heaviest section	21 kg